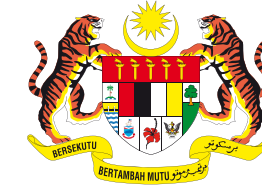


REDISCOVER RECONNECT



ROLPOP 5



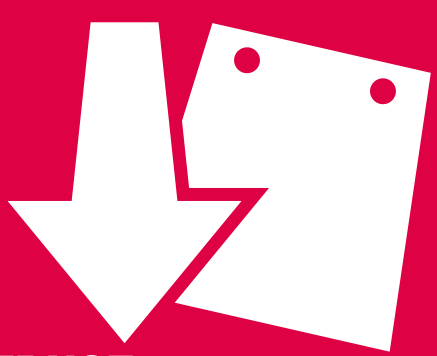
*4R2C is a concept developed by GEC from the global 3R concept.

SIMPLE GUIDELINE ON BEST MANAGEMENT PRACTICES ZERO WASTE SCHOOL

4R2C APPROACH*



RETHINK
Always rethink to save resources. Do you really need it?



REDUCE
Reduce purchases! Just buy what is needed.



REUSE
Reuse of used goods! Or change it into new products.



RECYCLE
Paper, plastics tetrapack, metal, aluminium tin can be recycled.

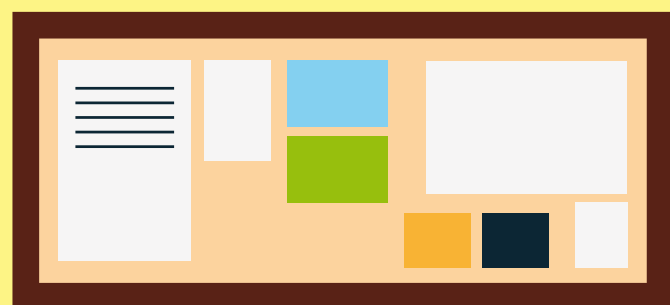


COMPOST
Compost organic waste! Can be used as fertilizer.



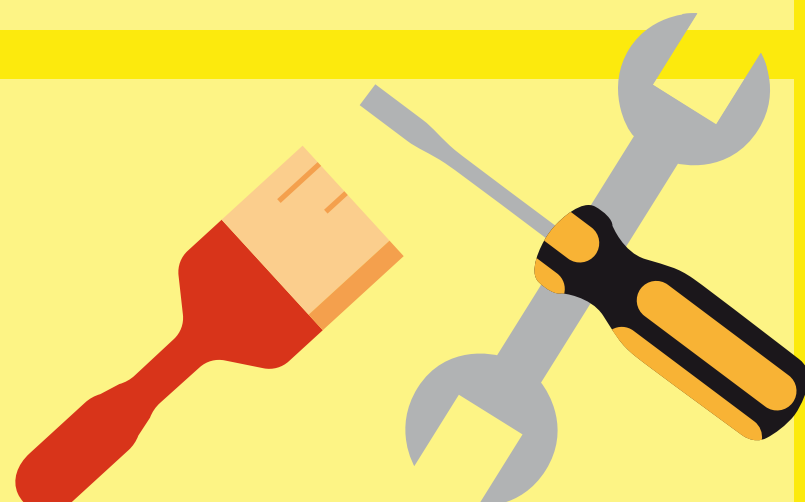
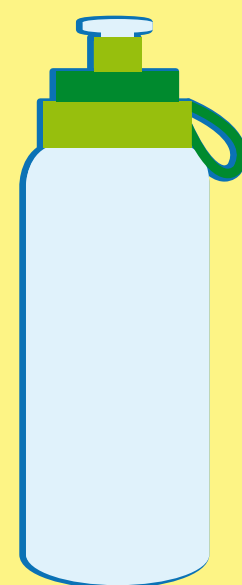
CLOSE THE LOOP
Buy items that are made from recycled materials.

CLASSROOM



Display and share informative materials on environmental protection on the information board.

Use reusable water bottle. Avoid using single use plastic bottles.



Use your own creativity to customize damaged good.



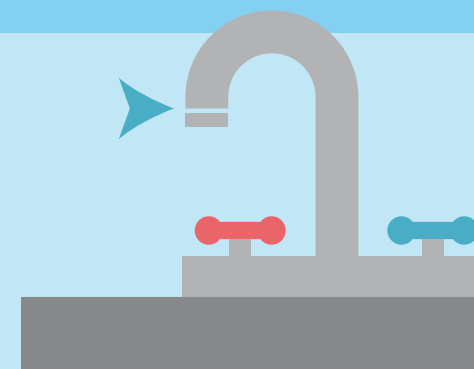
Establish a green corner in the classroom using used materials.

Stationery/bags/books that are still in good condition can be donated or sold/given away at an end-of-year schoolwide sale.

TOILETS



Use natural air fresheners (like pandan, citronella and charcoal).



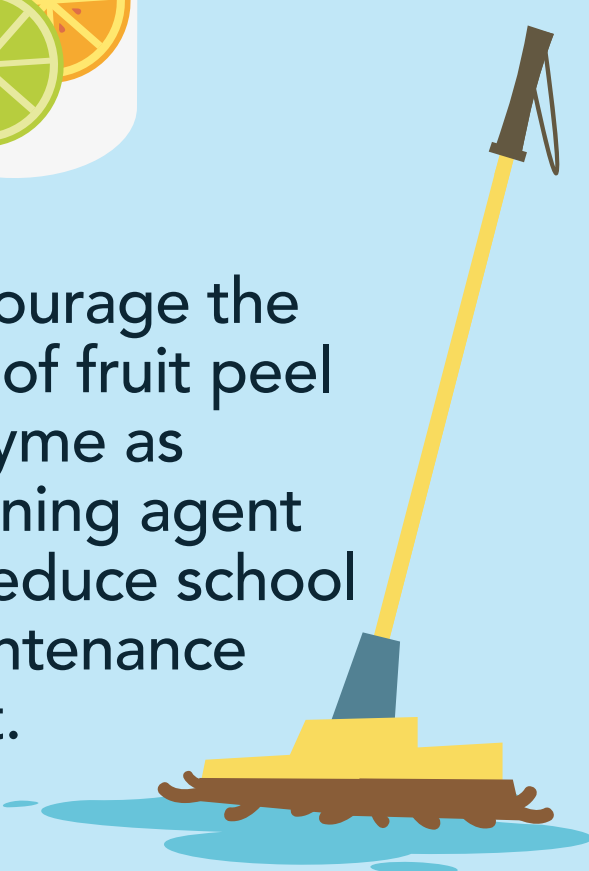
Water thimbles can be installed on taps to reduce water wastage.

Place used plastic bottles (filled with pebbles) into the toilet tanks as a displacement mechanism to reduce water usage.

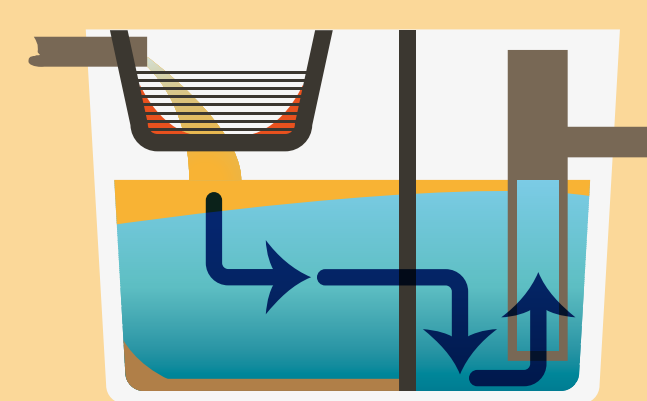


Use fruit peel enzyme as cleaning agent.

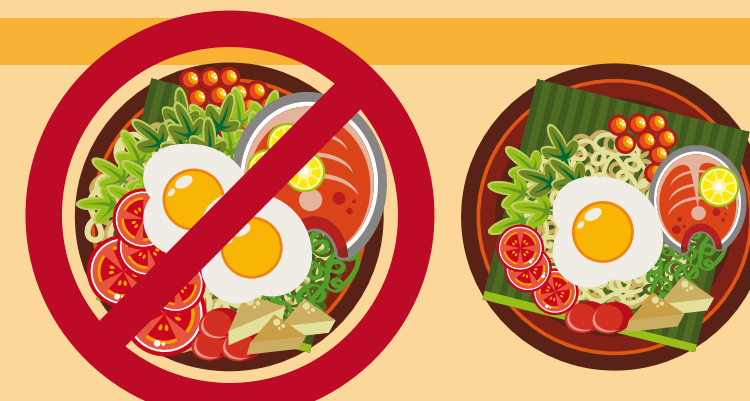
Encourage the use of fruit peel enzyme as cleaning agent to reduce school maintenance cost.



CANTEEN



Fix fats, oil and grease (FOG) traps at the pipe outlets.



Reduce food wastage by taking only the amount you need.

Reduce usage of single use plastic. Bring your own container, bottle and bag to buy food and drinks.



Segregate organic waste (food/garden waste) to make compost/ garbage enzyme.



Collect used cooking oil to be recycled and as additional income for the school.



GARDEN



Avoid using chemical fertilizers/pesticides in the garden.



Collect rain water for usage in the garden and toilets.

Use existing materials (plastic bottles glass) to sow seedlings or as decorative.



Rinse, flatten and segregate items that are recyclable according to its category.



Garden produce can be sold to cover the cost of garden maintenance.

